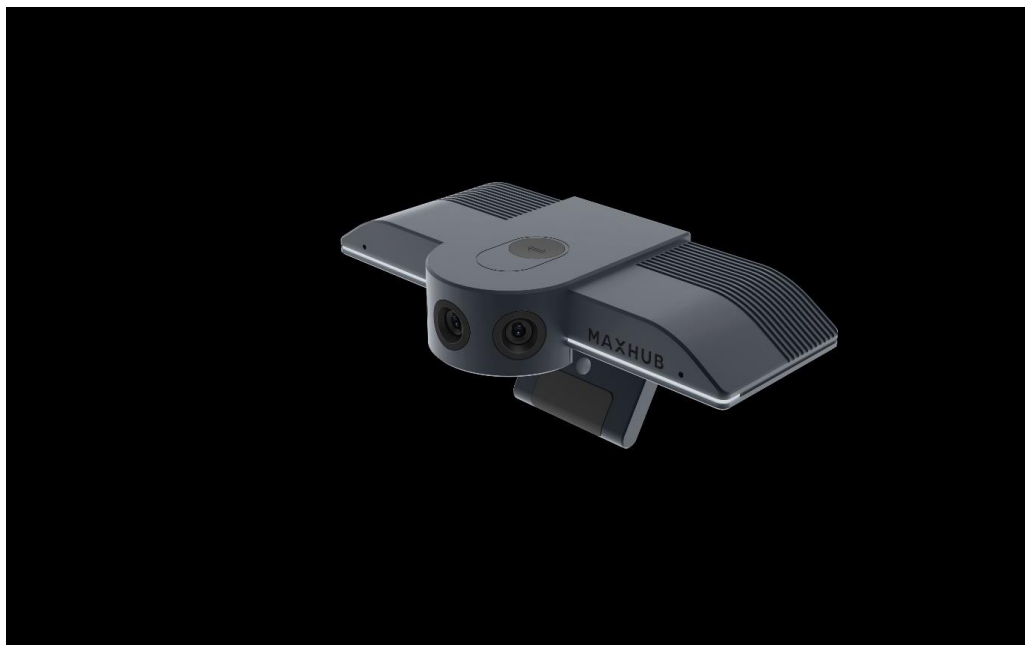


Product Specification



1、Camera

Effective Pixel	12MP
Encode	MJPEG, H.264, YUY2
Video System	1.H.264(30fps)/MJ(25fps) 3840*2160;2560*1440;1920*1080;1280*720;1024*576;960*540;800*600;640*480;640*360;480*270;352*288;320*240 ; 2.YUV2(30fps)

MAXHUB

	640*480;640*360;480*270;352*288;320*240 ;
Focus Method	Fixed
Depth of Field (DOF)	0.5-5m
Maximum field of view	180

3. Microphone Parameters

Quantity	2
Pickup Distance	0~4m

4. I/O Port

USB Type - C	1
USB Type - A	1

5. Physical Specifications

Dimension LxHxD	144.1 x 73 x 25.7mm
Dimension (package) LxWxH	TBD
Net Weight	TBD

MAXHUB

Gross Weight	TBD
--------------	-----

6. Accessories

USB Cable	1
User Manual	1

7. Environmental Conditions

Operation Temperature	0°C~40°C
Operation Humidity	10%~90%RH
Storage Temperature	-20°C~60°C
Storage Humidity	10%~90%
Altitude	Below 5000 meters